

Allendale Elementary School

Community Meeting



Agenda



**WELCOME AND
INTRODUCTIONS**



**ROLES &
RESPONSIBILITIES**



WHY ARE WE HERE?



**ALLENDALE ELEMENTARY
INFORMATION**



**SCHOOL DISPOSITION
PROCESS AND TIMELINE**



**PUBLIC ENGAGEMENT
OPPORTUNITIES**



**CITY PROCESS FOR
POTENTIAL
REDEVELOPMENT**



Q&A



Roles and Responsibilities



CRL Associates (“CRL”) is a leading government relations, public affairs and strategic communications firm assisting clients achieve greater levels of success in Colorado and across the country for over 41 years.

CRL has a proven track record designing and managing public involvement and stakeholder engagement processes to create wise, durable, and mutually beneficial solutions to complex issues.



Jones Lang LaSalle (“JLL”) is a premier professional services and investment management firm offering specialized real estate services to clients seeking increased value by owning, occupying and investing in real estate.

JLL has extensive experience working with public school systems and other K-12 educational facilities, offering a range of services such as P3 viability assessments, real estate portfolio review, funding assistance, and facilities management



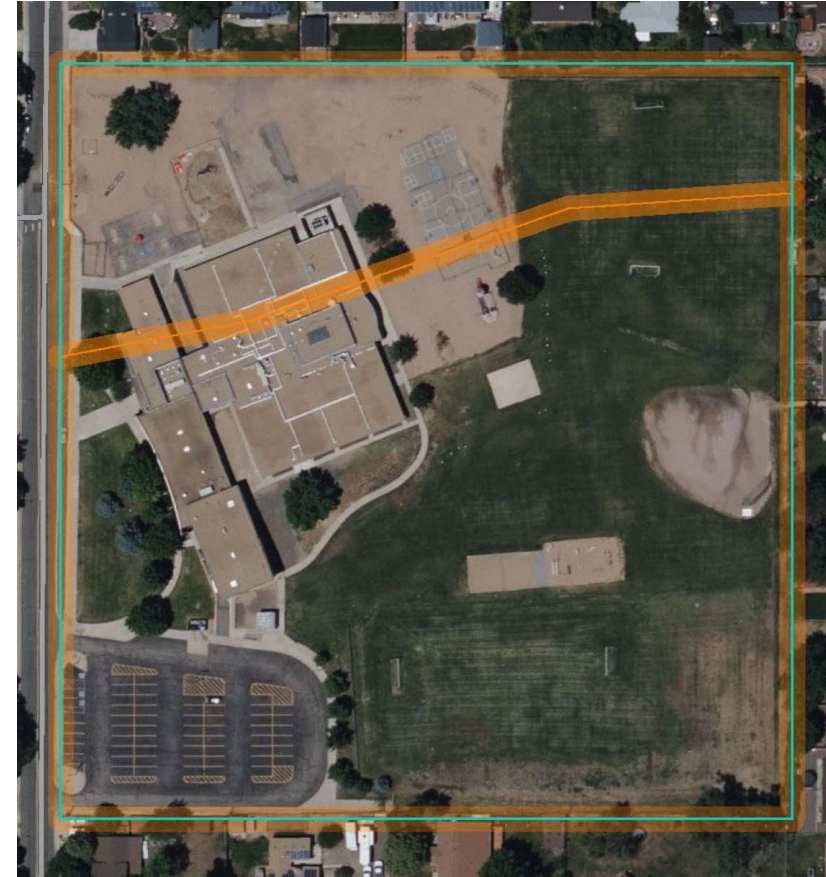
Why are we here?

- Since 2000, Jefferson County has grown by 55,854 residents, but then number of school-aged children has declined by over 29,000
- The District lost more than 5,000 students between 2019 and 2022
- Jeffco has capacity to serve 96,000 students in traditional district-managed schools and we currently serve 69,000 students in these schools
- Financial and operational challenges needed to addressed
- Call to action: Regional Opportunities for Thriving Schools



Allendale Elementary Information

Milestone	Date
Year built	1964
Vacant since	June 2021
Final year enrollment	117 students
Acres	9.62
Municipality	Arvada
Board approval of surplus	March 9, 2023
Community meeting	June 6, 2023





Property Disposition Process

JeffCo Public Schools Solicitation Process

(marketing, rfq/p response period, evaluation of offers, contract negotiation, due diligence, closing)

+/- 12 months

City Entitlement Process

(pre-concept planning, community engagement, staff reviews, Planning Commission, City Council approval)

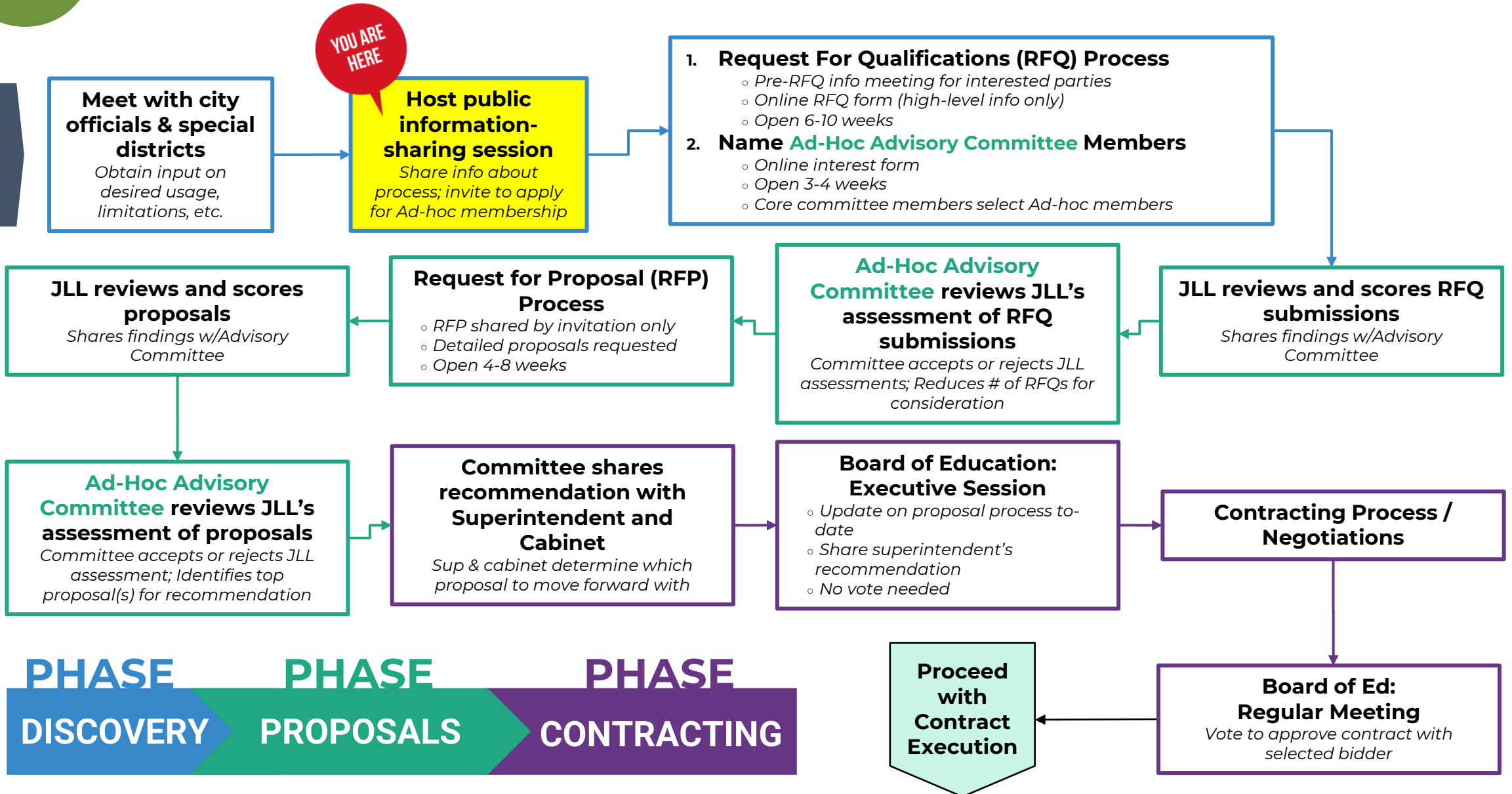
+/- 24 months

Development



Property Disposition Process

Board Votes "Yes" to Surplus
Each surplus property will go through this process





Public Engagement Opportunities

- Sign up to receive email updates
<https://tinyurl.com/JeffcoEmailUpdate>
- Apply for an Ad-Hoc Advisory Committee opening
<https://tinyurl.com/AllendaleAdHoc>
- Submit Property Disposition Community Voice form
<https://tinyurl.com/JeffcoCommentForm>
- Attend a Board meeting
- City of Arvada process





City Process for Redevelopment



